

# SPIROL®

## PIN INSTALLATION TECHNOLOGY

### Model PM Manual Pin Inserter

This exceptionally versatile tool is ideally suited to all levels of production: from a single unit for prototype assembly, to multiple units on an assembly line. The **Model PM** easily accommodates quick change-overs. The part holding device (fixture) is simply replaced from the base of the machine. The pin diameter is easily changed, positive pin depth easily adjusted, and part size variation easily accommodated. The use of high-tech shafting and bearings results in smooth operation, precise positioning, repeatability, and durability.

#### Design Features/Benefits:

- Easy:** - Simple to operate and easily adjustable
- Accurate:** - Base plate is pre-drilled for simple and precise fixture location
- Reliable:** - Post mount style frame is sturdy, lightweight and portable
- Versatile:** - Installs pins ranging in diameter from 0.8 mm to 4 mm, and 1/32" to 5/32" unified
  - Easy tooling changeover to accommodate a variety of applications
- Capacities:** - 200 lbs. maximum insertion force
  - Vertical adjustment: 0-178 mm (7")
  - Fixed throat dimension: 185 mm (7.5")
  - Stroke: 76 mm (3")

#### Simple Operation:

1. Load the part to be pinned into an alignment fixture
2. Manually insert a pin into the spring-loaded jaws of the pin-driving chuck
3. Pull the lever until the unit reaches a finely adjustable pre-set stop
4. Release the lever
5. Unload the finished assembly

**Optional alignment fixtures available.**

**Automatic and Semi-Automatic machines are also available from SPIROL.**



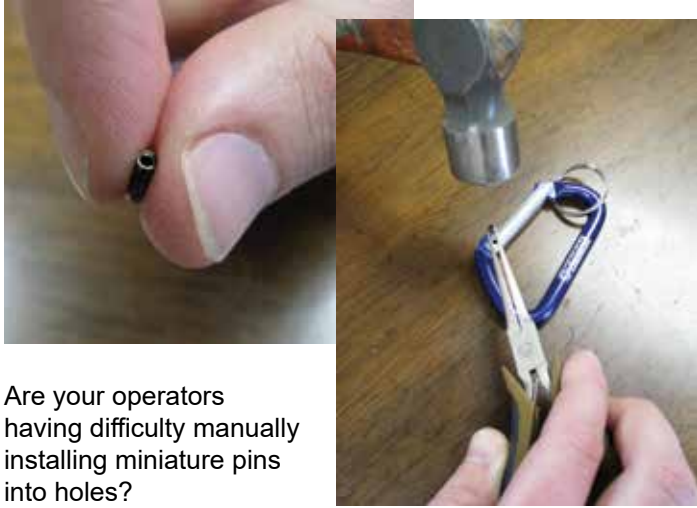
*Shown with optional fixture*

Easily accommodates all **SPIROL Pin-Driving Chucks:** SPD-101, CXA, CXD



See the **Model PM** in action:  
<https://youtu.be/k9XDIdn1FBE>





Are your operators having difficulty manually installing miniature pins into holes?

Are you experiencing an unacceptable percentage of damaged parts or other quality issues resulting from the installation process?

A significant advantage of the **SPIROL Model PM Manual Pin Inserter** is that it delivers the pin to the installation site with precise positioning, repeatability, and smooth operation without the operator having to struggle to hold the pin during installation.

Operators manually insert a pin into the spring-loaded jaws of the pin-driving chuck and pull the lever until the unit reaches a finely adjustable pre-set stop.

For very small pins, please consider the use of a SPIROL PR machine to eliminate the need for the operator to handle the pin.



Alignment fixtures are designed to accommodate customer products.

## Technical Centres

**Americas** **SPIROL Canada**  
3103 St. Etienne Boulevard  
Windsor, Ontario N8W 5B1 Canada  
Tel. +1 519 974 3334  
Fax. +1 519 974 6550

**SPIROL International Corporation**  
30 Rock Avenue  
Danielson, Connecticut 06239 U.S.A.  
Tel. +1 860 774 8571  
Fax. +1 860 774 2048

**SPIROL Shim Division**  
321 Remington Road  
Stow, Ohio 44224 U.S.A.  
Tel. +1 330 920 3655  
Fax. +1 330 920 3659

**SPIROL Mexico**  
Avenida Avante #250  
Parque Industrial Avante Apodaca  
Apodaca, N.L. 66607 Mexico  
Tel. +52 81 8385 4390  
Fax. +52 81 8385 4391

**SPIROL Brazil**  
Rua Mafalda Barnabé Soliane, 134  
Comercial Vitória Martini, Distrito Industrial  
CEP 13347-610, Indaiatuba, SP, Brazil  
Tel. +55 19 3936 2701  
Fax. +55 19 3936 7121

**Europe** **SPIROL United Kingdom**  
17 Princewood Road  
Corby, Northants  
NN17 4ET United Kingdom  
Tel: +44 (0) 1536 444800  
Fax: +44 (0) 1536 203415

**SPIROL France**  
Cit  de l'Automobile ZAC Croix Blandin  
18 Rue L na Bernstein  
51100 Reims, France  
Tel: +33 (0) 3 26 36 31 42  
Fax: +33 (0) 3 26 09 19 76

**SPIROL Germany**  
Ottostr. 4  
80333 Munich, Germany  
Tel: +49 (0) 89 4 111 905 71  
Fax: +49 (0) 89 4 111 905 72

**SPIROL Spain**  
Plantes 3 i 4  
Gran Via de Carles III, 84  
08028, Barcelona, Spain  
Tel/Fax: +34 932 71 64 28

**SPIROL Czech Republic**  
Evropsk  2588 / 33a  
160 00 Prague 6-Dejvice  
Czech Republic  
Tel: +420 226 218 935

**SPIROL Poland**  
ul. Solec 38 lok. 10  
00-394, Warsaw, Poland  
Tel. +48 510 039 345

**Asia Pacific** **SPIROL Asia Headquarters**  
1st Floor, Building 22, Plot D9, District D  
No. 122 HeDan Road  
Wai Gao Qiao Free Trade Zone  
Shanghai, China 200131  
Tel: +86 (0) 21 5046-1451  
Fax: +86 (0) 21 5046-1540

**SPIROL Korea**  
16th Floor, 396 Seocho-daero,  
Seocho-gu, Seoul, 06619, South Korea  
Tel: +82 (0) 10 9429 1451

e-mail: [info-ca@spirol.com](mailto:info-ca@spirol.com)

**SPIROL.ca**